



## Squirrel sq loggers

Multi channel, accurate, flexible data loggers with smart features and connectivity

# Squirrel sq loggers

## Overview

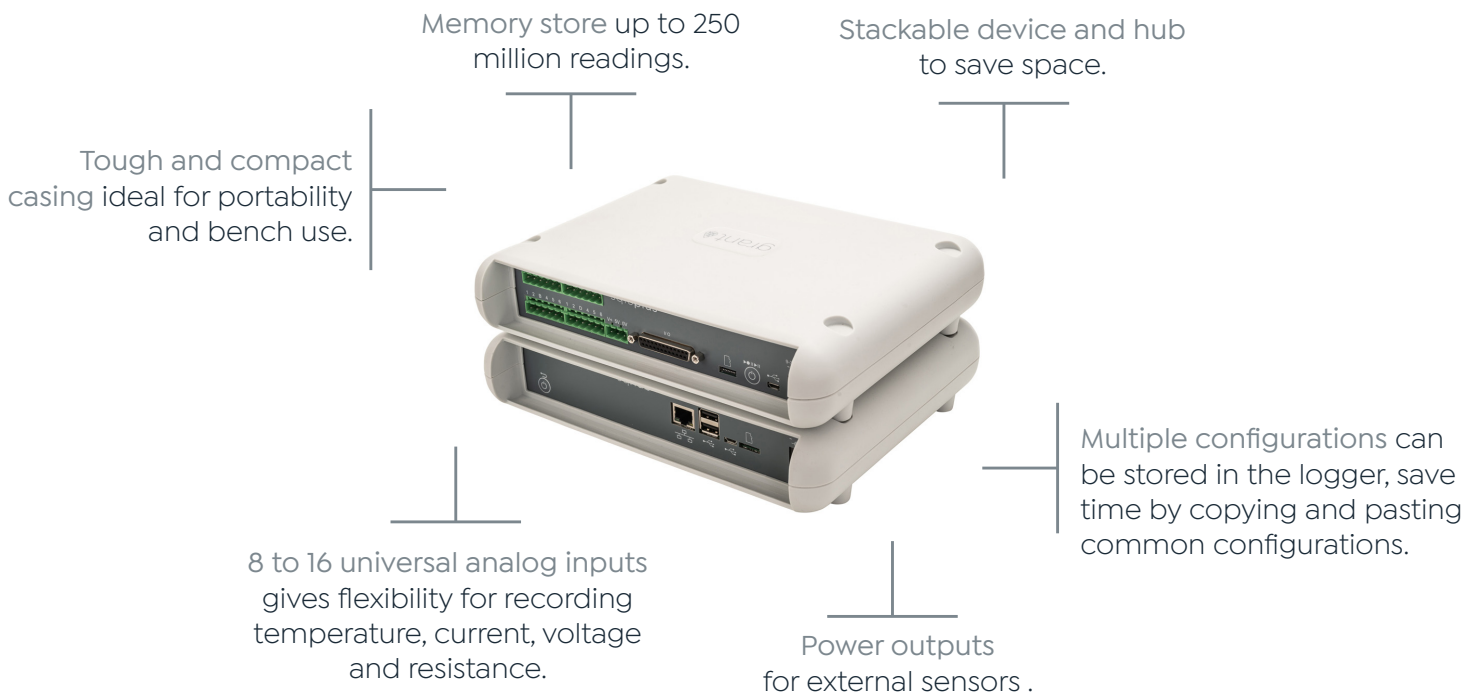
The Squirrel sq range of data loggers and software, offers you the ultimate experience in data logging through powerful performance, connectivity and innovative software. These next generation loggers boast multiple features to meet your business and applications needs.

The universal channel inputs measure current, voltage, resistance, and a host of parameters including; temperature, humidity, pressure, flow, wind speed, and concentration. Digital channels automatically trigger or stop logging. This means you can set the logger to automatically start or stop logging if an event occurs.

Communication through a dedicated mobile app comes as standard via wireless Bluetooth as well as the ability to network data loggers through the all-new communications hub, giving a host of remote operating options together with powerful data capture. Get the right data, alerts and alarms when and where you want them.

Easy to use and easily programmed, using the new SquirrelView software. The all-new Squirrel data loggers give you everything from standalone portable data logging to a fixed on-line monitoring system that measures many parameters, always giving you instant data access.

Each logger has 8 differential channels and is easy to extend using the new SquirrelView software and sqhub. Multiple loggers may be linked, enabling up to 128 channels of data to be measured and monitored at any one time. Designed for stacking, saving you space and giving you the option to use multi channel logging.



## Small in size, big in capability

- Tough and technology lead loggers, designed to give fast and accurate data, store it safely and retrieve easily for precise reporting when you need it.

# Squirrel sq loggers

## sq16

The sq16 is our entry level logger with long battery life, making it ideal for portable applications and routine data logging applications. The logger can be started or stopped using the multi function button which displays logger status, this means a PC is not required to run the logger in situ. Store up to 250 million readings in the Squirrel's onboard memory and up to 6 logger configurations. Use the SD Card memory slot for grabbing measured data in the field or use the SquirrelView app or software to download and export your data.

---

Easy to use simple set-up and intuitive to use

---

Long battery life gives long life operation and portability

---

Tough casing and curved design ideal for environmental applications

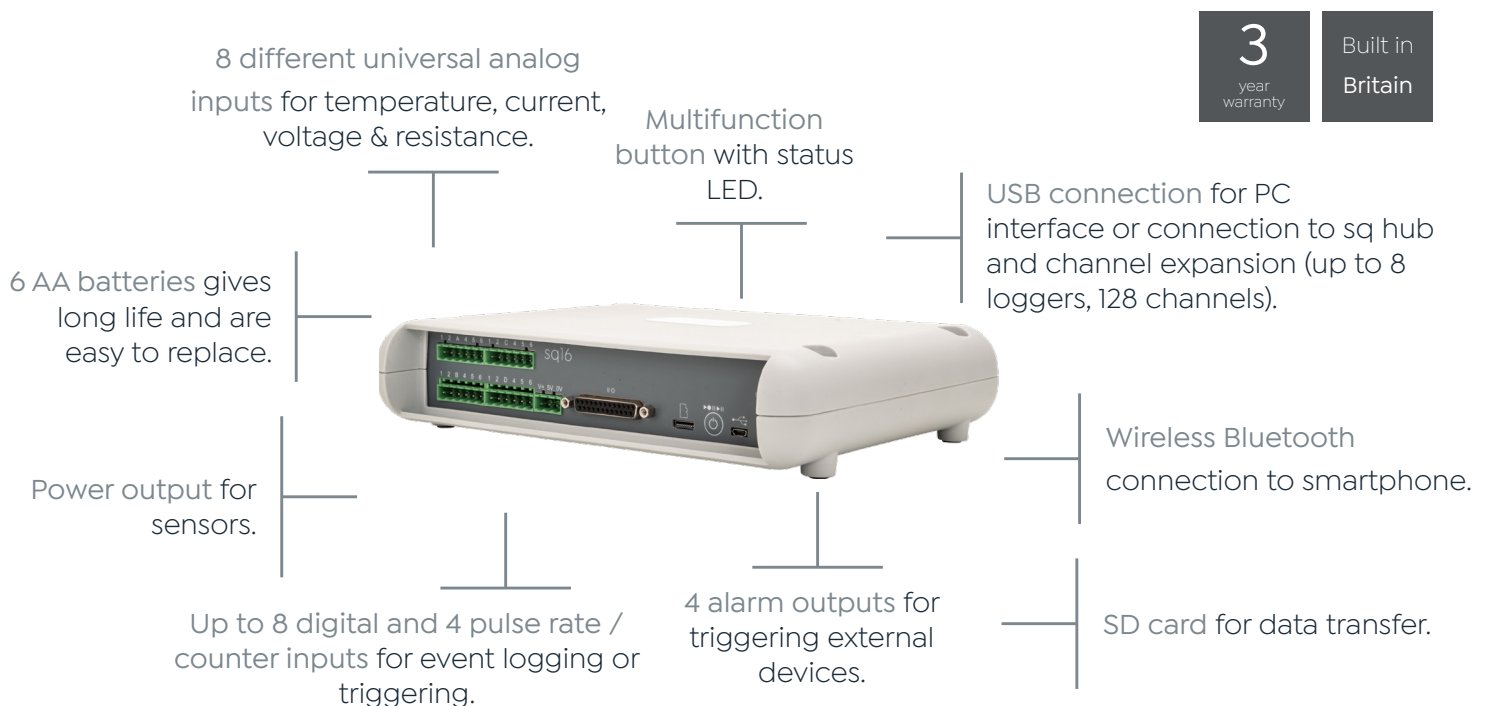
---

Bluetooth and USB connectivity for multiple connection choices

---

SD memory card for ease of data transfer

---



## Powerful performance, meets your application needs

- Portable monitoring, environmental applications, vehicle and transport applications and general industrial monitoring.

# Squirrel sq loggers

## sq16plus

The sq16plus boasts more advanced technology, giving faster logging speeds. With a 3 and 4 wire PT resistance probe support, you get the best accuracy in temperature measurement.

---

Game changing accuracy with precise data capture technology

---

Network ready plug and play

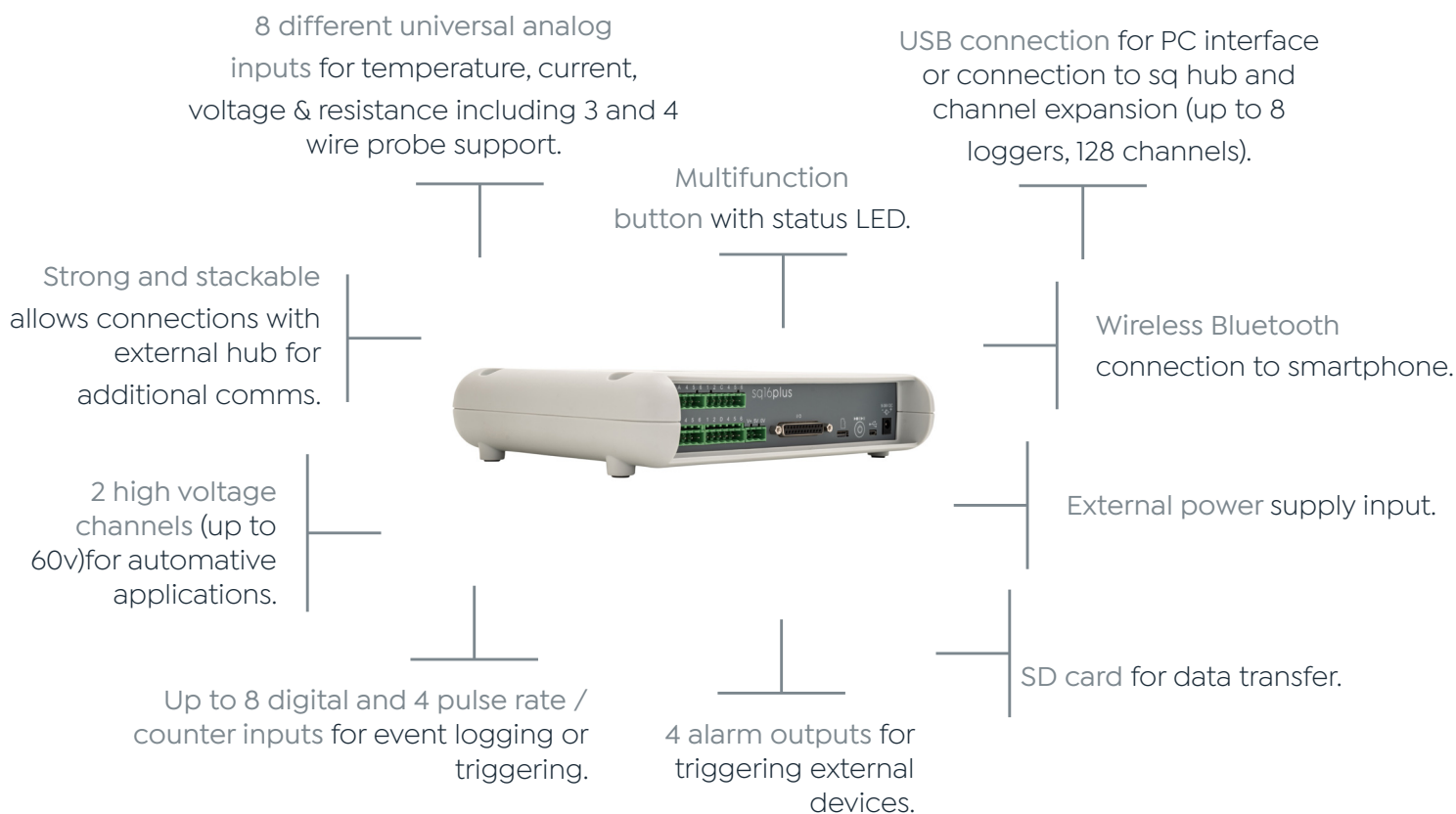
---

Remote monitoring with data capture anywhere and anytime via desktop or mobile device

---

Channel expansion up to 128 channels

---



## Game-changing data accuracy, empower your industry

- Pharmaceutical, thermal mapping, aerospace, automotive, quality control and compliance monitoring.

# Squirrel sq loggers

## sq16hub

The sqhub is our all-new communications gateway, giving connectivity between loggers and a whole host of networking possibilities. WiFi, Ethernet, Open Thread, Lora and 4G connections means, online data from a network of loggers can be accessed instantly. With alerts, alarms and automated data forwarding, the sqhub makes it simple to access the data you want when you want it. The sqhub gives scalability, putting you in control of multiple data loggers and inputs.

---

Network ready plug and play

---

Remote monitoring data capture anywhere and anytime via desktop or mobile device

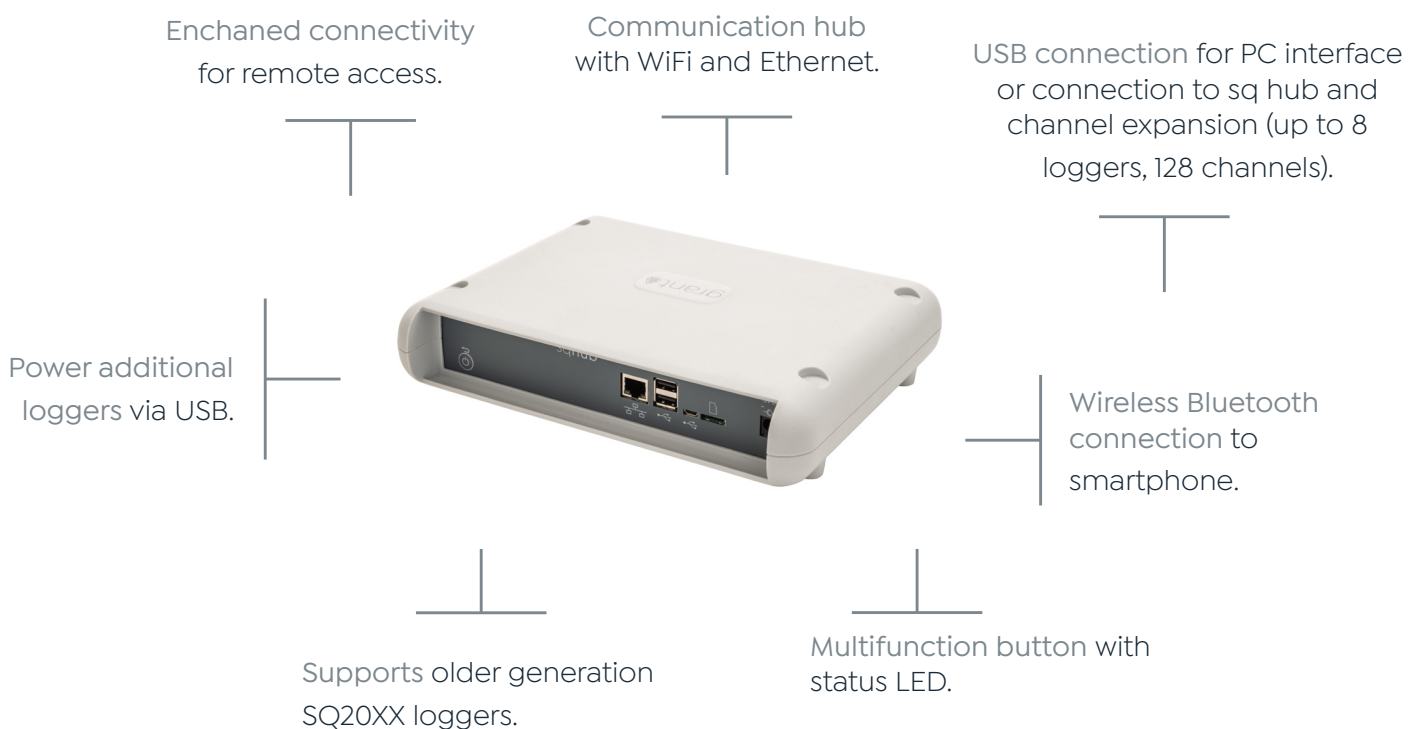
---

Channel expansion up to 128 channels

---

Instant notification of temperature excursions

---



## Innovative software, designed for any application

- Building monitoring i.e. IAQ, on line data across large sites, critical temperature monitoring in the cold chain, validation, seamless data integration.

# Squirrel sq loggers

## Mobile app

The mobile app has been designed to interface with the loggers using Bluetooth or via a WiFi connected network and works on Android/iOS.



## SquirrelView software

Easily programmed using the all-new SquirrelView software and all-new Squirrel sq data loggers, you get instant access to jam-packed features. Everything from standalone portable data logging, to a fixed online monitoring system measuring a host of parameters and instant data access.

SquirrelView lets you to set up the logger and start recording in a few clicks. Whatever your level of data logging experience, set up simple or advanced acquisitions, record, view and analyse your data quickly and easily.

---

Powerful and easy to use functionality for complete analysis and configuration

---

Upgrade your system channel expansion links loggers and combines data from each logger model

---

Coming soon! CFR 21 part 11 fully featured versions of the software with analysis - available in 2023.

---

## Smart technology, simple to control

- Innovative software and hardware solutions designed to help you control your process, your budget and your time.

# Squirrel sq loggers

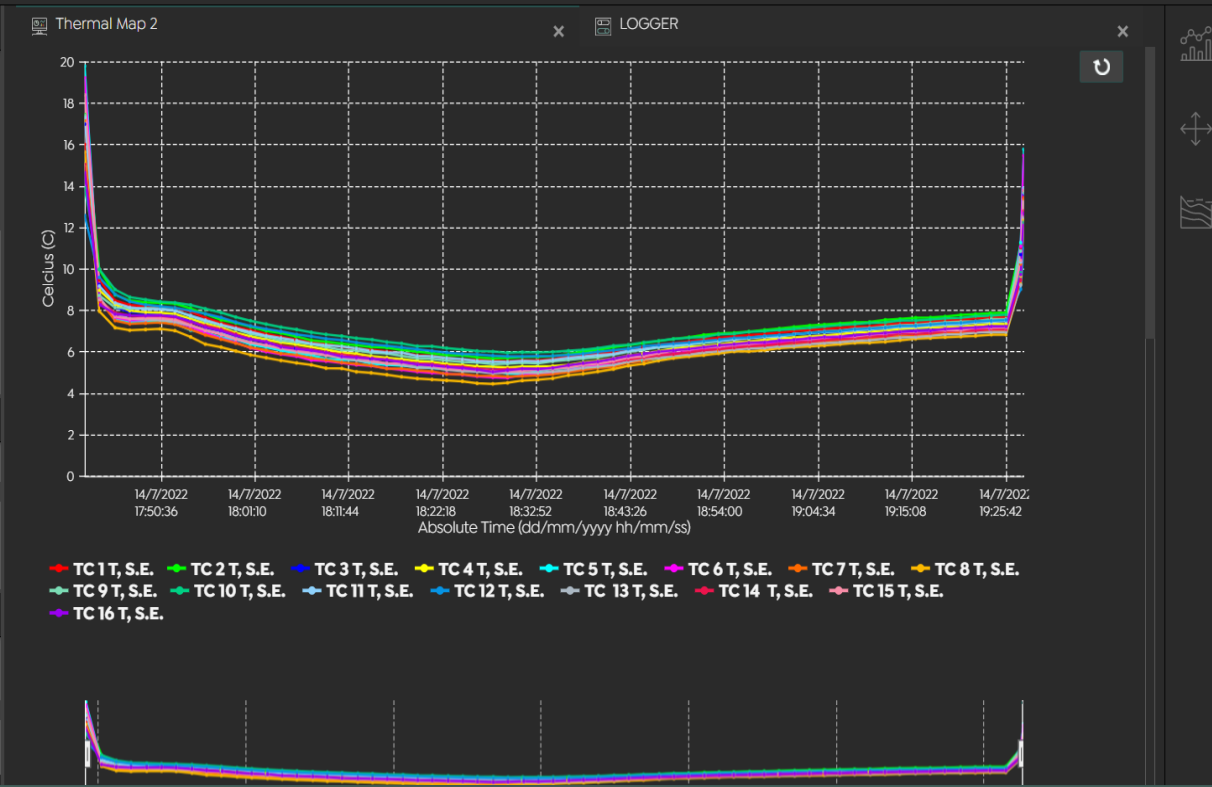
## Specifications

	sq16	sq16plus
	basic	advanced
No of channels diff	8	8
No of channels single ended	16	16
Channel expansion	NO	YES up to 128 channels*
2 wire resistance	YES	YES
3/4 wire resistance	NO	YES
Differential voltage	-25 to 50V	-40 to 60V
1/4, 1/2 & full bridge	YES	YES
Single ended DC	YES	YES
Differential DC	YES	YES
Current Loop (4 20mA)	YES	YES
Themocouple S.E and diff B, C, D, J, K, N, R, S and T	YES	YES
Thermistor Grant & user defined	YES	YES
Digital state input channels	YES	YES
Digital alarm outputs	YES	YES
Ref junction temperature	YES	YES
Scan intervals	up to 24 hrs	up to 24 hrs
Internal ref temp accuracy	better than 0.1°C over range 5-40°C	better than 0.1°C over range 5-40°C
Fast channels	up to 8Hz	up to 96Hz x2 channels
Calculated channels	16	16
Meter mode (via smartphone)	YES	YES
Battery life	up to 6 months all channels logging every 15 mins	up to 6 months all channels logging every 15 mins
External power	8 to 38 V dc at 150mA when connected to an external supply	8 to 38 V dc at 150mA when connected to an external supply
Sensor power output	8 to 38 V dc at 150mA when connected to an external supply	8 to 38 V dc at 150mA when connected to an external supply
Memory	x 16GB	x 16GB
Operating environment	-30 to +65°C, 0 to 95% RH (non condensing)	-30 to +65°C, 0 to 95% RH (non condensing)
USB	YES	YES
Micro SD	YES	YES
Bluetooth	YES	YES
Ethernet	NO	NO
WiFi	NO	NO
Open Thread	NO	NO
4G	NO	NO
Lora	NO	NO
Dimensions	257mm x 206mm 57.3mm	57mm x 206mm 57.3mm
Weight	1.5 kg	1.5 kg

\* using sqhub

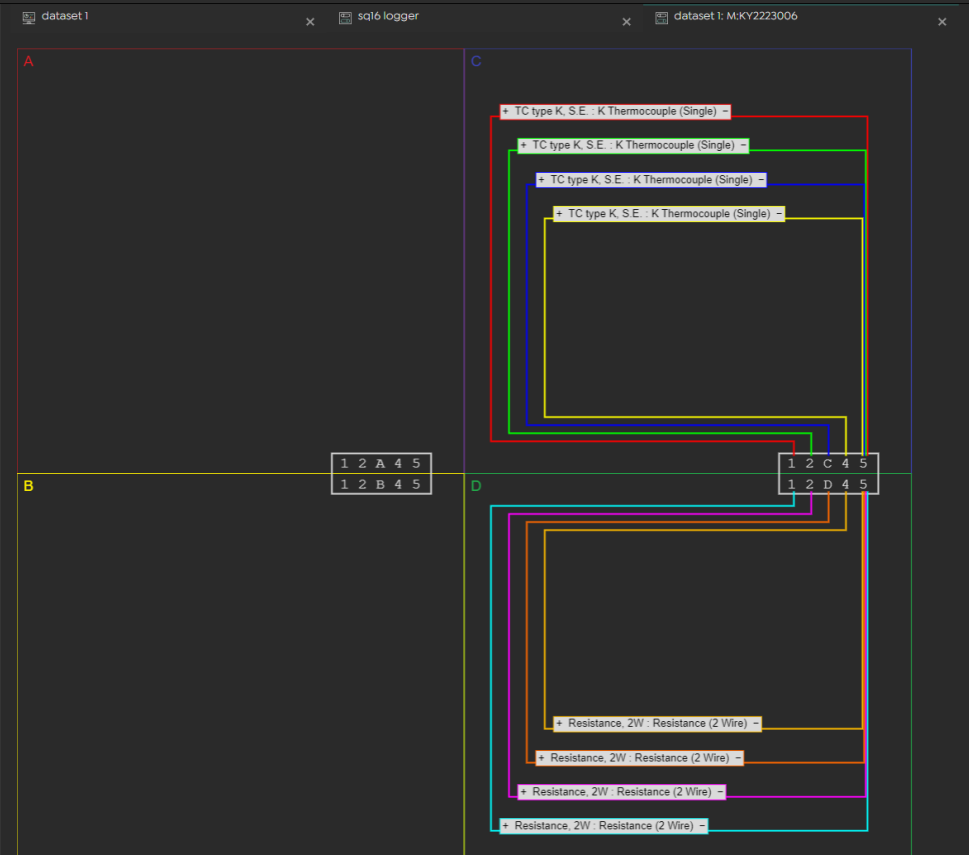
Navigation bar with icons for: Create Setup, Save Setup, Export Setup Files, Import Setup File, Meter Selected, Stop All Metering, Arm Selected, Disarm Selected, Job File Manager, Export Job Files, Import Job File, New Dataset, Export Datasets, Print, Import Dataset, Delete, Full Screen, Check Logger Alarm.

Device Tree sidebar showing 'This PC' and 'LOGGER' sections with various TC type T, S.E. entries and 'Setup Files' section.



Navigation bar with icons for: Create Setup, Save Setup, Export Setup Files, Import Setup File, Meter Selected, Stop All Metering, Arm Selected, Disarm Selected, Job File Manager, Export Job Files, Import Job File, New Dataset, Export Datasets, Print, Import Dataset, Delete, Full Screen, Check Logger Alarm.

Device Tree sidebar showing 'This PC' and 'sql6 logger' sections with 'Resistance, 2W' entries and 'Setup Files' section.



No.	Description	Block	Log
> 9	TC type K, S.E.	C 1	✓ Edit Copy
> 10	TC type K, S.E.	C 2	✓ Edit Copy
> 11	TC type K, S.E.	C 3	✓ Edit Copy
> 12	TC type K, S.E.	C 4	✓ Edit Copy
> 13	Resistance, 2W	D 1	✓ Edit Copy
> 14	Resistance, 2W	D 2	✓ Edit Copy
> 15	Resistance, 2W	D 3	✓ Edit Copy
> 16	Resistance, 2W	D 4	✓ Edit Copy